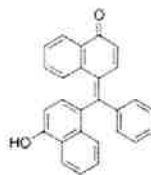


## Certificate of Analysis

Product Name:  
 $\alpha$ -Naphtholberzein - indicator (pH 8.2-10.0)

**Product Number:** 70480  
**Batch Number:** BCCL7012  
**Brand:** SIAL  
**CAS Number:** 145-50-6  
**Formula:** C27H18O2  
**Formula Weight:** 374,43 g/mol  
**Quality Release Date:** 12 APR 2024



502305  
 N2250

Test	Specification	Result
Appearance (Color)	Red to Very Dark Red and Black	Very Dark Red
Appearance (Form)	Powder	Powder
Thin Layer Chromatography	Corresponds to Standard	Corresponds
Solubility (Color)	Red to Very Dark Red	Very Dark Red
0.01G IN 10ML ETHANOL		
pH		8.2
(pH-Transition) 8.2 Orange-Brown		
pH		10.0
(pH-Transition) 10.0 Blue-Green		
Infrared Spectrum	Conforms to Structure	Conforms

Dr. Reinhold Schwenninger  
 Quality Assurance  
 Buchs, Switzerland CH

Sigma-Aldrich warrants, that at the time of the quality release or subsequent retest date this product conformed to the information contained in this publication. The current Specification sheet may be available at [Sigma-Aldrich.com](http://Sigma-Aldrich.com). For further inquiries, please contact Technical Service. Purchaser must determine the suitability of the product for its particular use. See reverse side of invoice or packing slip for additional terms and conditions of sale.

